



300
616



KEY FEATURES

- Wide Cabin
- Dual SRS Airbags
- ABS Brakes with Electronic Brakeforce Distribution
- Easy Start – Take Off Assist (for Short & Medium)
- ADR 80/02 Compliant
- Ventilated Disc Brakes
- Corner Turning Lamps
- Energy Absorbing Steering Wheel

KEY SPECIFICATIONS

- GVM.** 5500kg, optional 4495kg
- GCM.** Short & Medium 9000kg,
optional 7995kg, Auto 7300kg
- Engine.** 4.0-litre, Common Rail, Direct Injection,
Turbocharged and Intercooled
- Power.** 110kW @ 2700rpm (ISO)
- Torque.** 397Nm @ 1800rpm (ISO)
- Wheelbases** . 2810mm (Short), 3430mm (Medium & Auto)





616

Engine & Driveline specifications

ENGINE

Engine	Hino N04C TV
Max output (ISO Net)	110kW (150 PS) at 2700rpm
Max output (JIS GROSS)	114kW (155 PS) at 2700rpm
Max torque (ISO Net)	397Nm (40.5 kgf/m) at 1800rpm
Max torque (JIS GROSS)	404Nm (41.2 kgf/m) at 1800rpm
Maximum engine speed	3200rpm
Type	Diesel, four cycle, four-cylinder in line, overhead valve, water cooled
Combustion system	Direct injection type
Bore & stroke	104mm x 118mm
Piston displacement	4.009 litres
Fuel injection system	Electronic control, common rail type
Air intake system	Turbo-intercooled, stack-type air intake
Air cleaner	Paper element
Fan clutch	Equipped
Catalytic converter	Equipped
Exhaust outlet	Horizontal

TRANSMISSION

Short & Medium	M550
Type	Five-speed overdrive manual
Clutch type	Dry single plate, diaphragm type with damper springs
Facing outside diameter	325mm
Facing lining area	483 x 2cm ²
Control	Hydraulic with vacuum booster
Auto	A860E
Type	Six-speed electronically controlled overdrive automatic with torque converter lock-up on 2nd, 3rd, 4th, 5th and 6th gears
Hill Descent Control	Equipped

BRAKES

Service brakes	Hydraulic system with ventilated disc brakes front and rear
Control	Vacuum servo with hydraulic assist & dual circuits
Front disc diameter	296mm
Rear disc diameter	281mm
Anti-lock system (ABS)	Equipped
Electronic Brakeforce Distribution (EBD)	Equipped
Easy Start system	Equipped (Short & Medium)
Exhaust brake	Electric-vacuum actuator with valve in exhaust pipe

PERFORMANCE & GEAR RATIOS

Maximum speed (km/h)	120 (Short & Medium), 127 (Auto)
Gradeability tan θ %	52.1 (Short & Medium), 60.0 (Auto)

M550

1st	.4.981	4th	.1.000
2nd	.2.911	5th	.0.738
3rd	.1.556	Rev.	.4.625

A860E

1st	.3.742	5th	.0.773
2nd	.2.003	6th	.0.634
3rd	.1.343	Rev.	.3.697
4th	.1.000		

Final drive ratio: Short and Medium	4.875:1
Auto	5.375:1

AXLE LOAD & TYRE LOAD LIMITS

Front axle	2600kg
Tyres	2360kg
Rear axle	4400kg
Tyres	4480kg
Front axle type	Reversed Elliot, "I" section beam
Rear axle type	SH12 full-floating, single reduction, single speed by Hypoid gears

SUSPENSION

Front suspension	Semi-elliptic tapered leaf springs with silencers, shock absorbers and stabiliser bar
Spring dimensions, span & width	1250mm x 70mm
Rear suspension	Semi-elliptic main and auxiliary tapered leaf springs with silencers and shock absorbers
Spring dimensions, span & width	1300mm x 70mm
Auxiliary springs	900mm x 70mm

WHEEL & TYRES

Wheel type	5-stud disc wheel
Wheel & rim size	195/85R16 114/112 & 16x5.5K-113mm
Number of tyres	Seven including spare
Spare tyre carrier	Equipped

ELECTRICAL

Type	24 volt, negative earth
Batteries	12V x 2, series connected
Alternator type	Built-in rectifier and voltage regulator
Capacity	24V – 60-A
Starter capacity	24V, 4.5kW



616

Cab equipment & Instrumentation

CHASSIS FRAME

Type	Ladder-shaped channel section side rails
Chassis width at rear	750mm
Max. section (depth x flange x thickness)	191 x 65 x 5.0mm
Tensile strength	540N/mm ²
Towing hooks.	Equipped at front and rear
Front bumper.	Painted to cabin colour

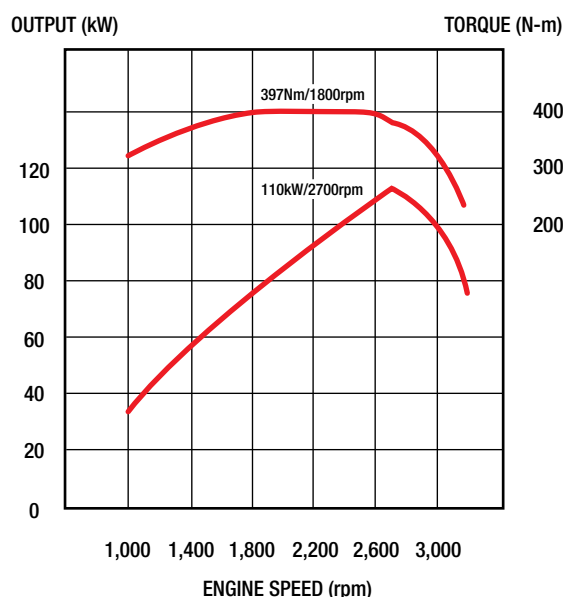
CAB EXTERIOR

Type	Forward control, all steel welded construction, torsion-bar tilt mechanism, fully trimmed
Windscreen wipers.	Electric, dual wipers, intermittent and 2-speed
Outside rear mirrors	Two, movable flat type
Radiator grille	Painted same colour as cabin
Lamps	Halogen headlamps, cornering lamps, fog lamps

CAB INTERIOR

Steering	Telescopic tilt column with integral power steering
Windscreen glass	Laminated glass
Seating capacity	Three
Driver's seat	2-way adjustable, urethane foam pads, high-back seat
Assistant's seat	Fixed, urethane foam pads, high-back seat
Seat cover.	Fabric cover
Seat belts	
Driver's seat	3-point type with ELR and pre-tensioner
Assistant's seat	3-point type with ELR and pre-tensioner
Centre passenger's seat.	2-point type
Sun visors	For driver and passenger
Ventilator	Forced type by electric blower
Inside rear mirror	One, flat type
Cigarette lighter (24 volt)	Equipped
Audio	AM/FM radio with CD player
Heater and defroster	Equipped
Air conditioner	Equipped
Auto door lock	Equipped
Power windows	Equipped
SRS airbags	Equipped for driver and assistant
Seat back console	Equipped (centre)
Overhead consoles.	For driver and assistant
Cup holder.	Equipped

POWER & TORQUE CHART (ISO Net) N04C TV



INSTRUMENTS

1. Meter and gauges

- km-kg system
- Speedometer
- Fuel gauge
- Coolant temperature gauge
- Engine tachometer

2. Warning, pilot lamps and buzzers

- Turning signal & hazard indicator lamp
- Exhaust brake indicator lamp
- Engine oil pressure warning lamp
- Battery charge warning lamp
- High beam indicator lamp
- Parking brake indicator lamp
- Engine malfunction indicator lamp
- Fuel level warning lamp
- Fuel filter water accumulating level warning lamp
- Brake fluid level warning lamp
- Back-up warning buzzer
- Cab-tilt warning lamp
- ABS system failure warning lamp
- SRS airbag system failure warning lamp
- Easy Start indicator lamp

3. Switches

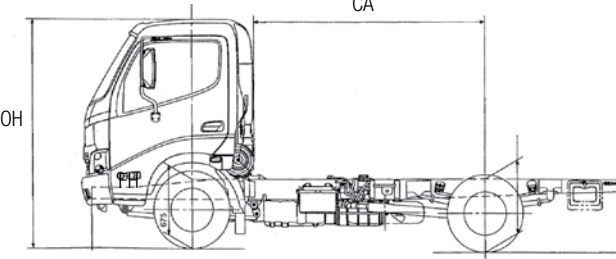
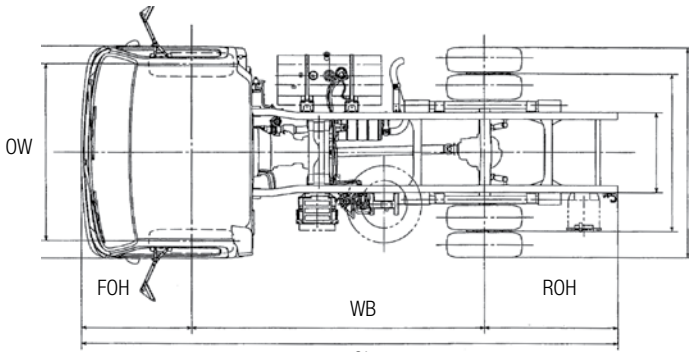
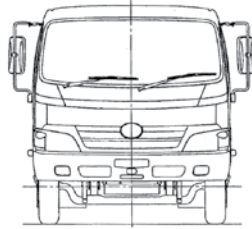
- Lighting switch
- Directional indicator, dimmer, passing switch
- Room lamp switch
- Hazard lamp switch
- Wiper and washer switch
- Exhaust brake switch
- Easy Start switch
- Easy Start release timing adjuster

4. Others

- One-key starting-stopping
- Horn button
- Remote keyless entry



616 Dimensions



DIMENSIONS - mm / Capacities

Product code	XZU407R-	XZU417R-	XZU417R-
	HKMMDQ3	HKMMDQ3	HKTMDQ3
Model	Short	Medium	Auto
Wheelbase (WB)281034303430
Overall length (OL)513061206120
Overall width (OW)199519951995
Overall height (OH)218521852185
Cab to axle centre (CA)220028402840
Front overhang (FOH)104510451045
Rear overhang (ROH)127516451645
Front chassis height675675675
Rear chassis height750745745
Road clearance185185185
Turning circle - m (kerb-to-kerb)9.811.611.6
Turning circle - m (wall-to-wall)11.113.013.0
Fuel tank - lt.100100100

Chassis mass – kg (minimal fuel, without spare tyre or tools)

Total218522352295
Front152015151565
Rear665720730
GVM550055005500
GCM900090007300

GENUINE ACCESSORY OPTIONS

Bull bar	Roof scoop
Chrome wheel covers	Side skirts
Electric mirrors	Stoneguard
Multimedia sat nav	Sunvisor
Rear vision camera	Timber dash panel

Please check with your dealer for price, availability & fitment for these options

WARRANTY

New vehicle warranty period

Light Duty Model	Axle configuration	Standard warranty (whichever comes first)	Cab corrosion perforation
300 616	4 x 2	3 years or 100,000km	36 months

Battery warranty – 12 months from date of delivery

Genuine parts or accessories warranty – 3 years unlimited kilometres when fitted by an authorised Hino dealer *

* For conditions, refer to the Hino Parts & Service warranty brochure

DISCLAIMER

Important notice. Hino Trucks are distributed in Australia by Hino Motor Sales Australia Pty Ltd A.C.N. 064 989 724.

All efforts have been made to ensure the information contained in this brochure was correct at time of printing or uploading. Hino Motor Sales Australia Pty Ltd reserves the right to alter any details of the specifications & equipment without notice. Hino in so far as it is permitted by law to do so, shall not be liable in any way as a result of any reliance placed by any person on anything contained in this brochure. You should therefore check with your authorised Hino dealer at the time of ordering your motor vehicle to ensure that colour, specifications, equipment, design features & options are available for the vehicle you are ordering. Please note that some options may only be available in combination with others. Authorised Hino dealers will on request provide up to date information on all accessories, design features, prices & availability.

Date of issue - 01/01/09 616 v1.X