

# Specification sheet



## FA LF55 15t

4x2 rigid

### Engines

LF55.220; 165 kW  
 LF55.250; 184 kW  
 LF55.280; 210 kW

### GVM<sup>1)</sup>

16000 kg

Max. front<sup>3)</sup>: 6000 kg  
 Max. rear<sup>4)</sup>: 10500 kg

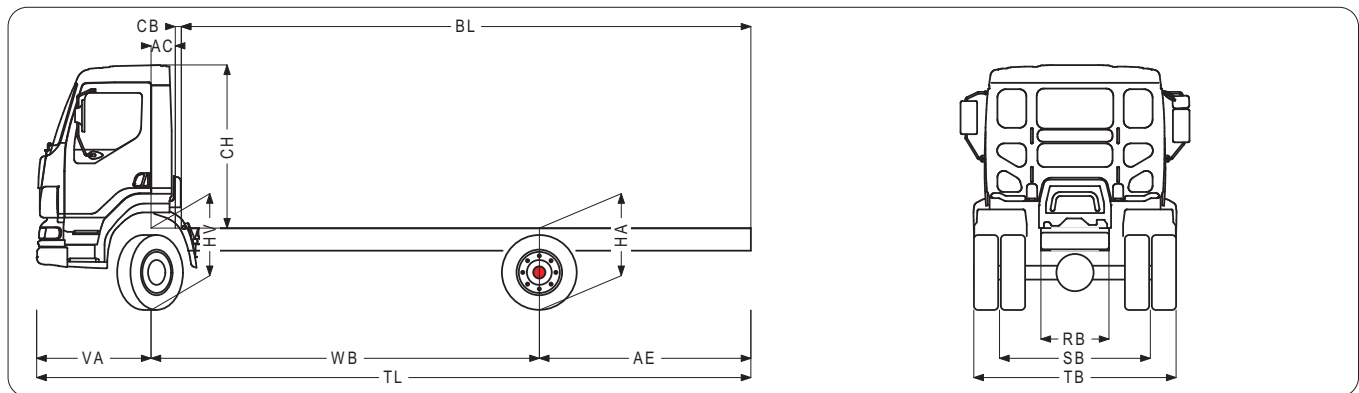
### GCM<sup>2)</sup>

20500 kg



Wheelbase - AE		Unladen weight <sup>5)</sup>			Gross Carrying Capacity			Variable dimensions										
	WB	AE <sup>6)</sup>	Front	Rear	Total	Front	Rear	Total	AC	CB <sup>7)</sup>	CH <sup>8)</sup>	BL <sup>9)</sup>	BL <sup>9)</sup>	TL	HA <sup>10)</sup>	HA <sup>11)</sup>	TK <sup>12)</sup>	TW <sup>13)</sup>
Day	4.2	2.27	2931	1653	4584	3069	7347	10416	0.28	0.07	1.89	5.90	6.80	8.28	0.98	0.95	14.21	15.68
	4.8	2.63	2949	1636	4585	3051	7364	10415	0.28	0.07	1.89	6.40	7.30	8.76	0.98	0.95	14.95	16.44
	5.35	2.96	2975	1645	4620	3025	7355	10380	0.28	0.07	1.89	7.20	8.20	9.64	0.98	0.95	16.33	17.83
	5.9	3.29	3000	1670	4670	3000	7330	10330	0.28	0.07	1.89	8.00	9.00	10.52	0.98	0.95	17.70	19.22
	6.3	3.53	3013	1682	4695	2987	7318	10305	0.28	0.07	1.89	8.60	9.60	11.16	0.98	0.95	18.71	20.23
Sleeper	4.2	2.27	3086	1653	4739	2914	7347	10261	0.68	0.07	1.89	5.20	6.40	8.28	0.98	0.95	14.21	15.68
	4.8	2.63	3104	1636	4740	2896	7364	10260	0.68	0.07	1.89	5.70	7.00	8.76	0.98	0.95	14.95	16.44
	5.35	2.96	3130	1645	4775	2870	7355	10225	0.68	0.07	1.89	6.50	7.80	9.64	0.98	0.95	16.33	17.83
	5.9	3.29	3155	1670	4825	2845	7330	10175	0.68	0.07	1.89	7.30	8.60	10.52	0.98	0.95	17.70	19.22
	6.3	3.53	3168	1682	4850	2832	7318	10150	0.68	0.07	1.89	7.90	9.20	11.16	0.98	0.95	18.71	20.23

Other dimensions VA: 1.33 HV<sup>14)</sup>: 0.92 HV<sup>15)</sup>: 0.82 RB: 0.79 SB: 1.75 TB: 2.35



1) Based on standard Australian axle load limits  
 2) Higher on application  
 3) Based on Tyre and Rim Association Handbook  
 4) Based on Tyre and Rim Association Handbook  
 5) Chassis and Cab Weight calculated with: Standard specification items and empty fuel tank. With Sleeper Cab; + 155 kg at front.  
 6) Other AE dimensions may be available for shown WB. Modify rear overhang to the calculated body length.  
 7) CB is based on standard air intake and/or exhaust.

8) Cab height is measured from frame member to closed cabin roof hatch.  
 9) Calculate customer specific body lengths with TOPEC.  
 10) Unladen height at centre of driven axle(s).  
 11)  
 12) TK = turning circle between kerbs (For comparison purposes only).  
 13) TW = turning circle between walls (For comparison purposes only).  
 14) Unladen height at centre of front axle(s).  
 15) Laden height at centre of front axle(s).

# FA LF55 15t

## ENGINE

PACCAR	6 cylinder, turbo intercooled
Piston displacement:	6.7 litres
Fuel injection:	Electronically controlled common rail
Type	GR 184
Maximum output	184kW / 250hp from 1900rpm
Maximum torque	950Nm at 1200 – 1700rpm
Options:	
- Type	GR 165
Maximum output	165kW / 220hp from 1900rpm
Maximum torque	850Nm at 1200 – 1700rpm
-Type	GR 210
Maximum output	210kW / 280hp from 2100rpm
Maximum torque	1020Nm at 1200 – 1800rpm

## CHASSIS

Completely flat-topped ladder type chassis frame; Riveted and bolted construction of channel-section main frame members and cross members; 340 litre aluminium fuel tank; Fuel tank height – 620 mm; 1x26 litre Adblue tank; Horizontal line type exhaust silencer inside the chassis frame; Spare wheel carrier with winch; Dimensions main frame members: 260 x 75 x 6 mm; Spray suppression; Front Underrun Protection (FUP); 5.90m wheelbase.

### Options:

- Wheelbase: 4.20m, 4.80m, 5.35m, 6.30m

## GEARBOX

6S1000: 6 speed ZF gearbox.

### Options:

- 9S6309: 9 speed Eaton gearbox
- 6AS1000: 6 speed, automated manual, ZF AS Tronic transmission
- 9S8309: 9 speed Eaton gearbox

	GR 165	GR 184	GR 210
9S8309-12.57/1.00	-	-	X
9S6309-12.57/1.00	X	X	-
6S800-6.58/0.78	X	X	X
6AS1000-6.75/0.78	X	X	X

## CLUTCH

Single type, pushed operation, asbestos free, dry plate, hydraulically operated and pneumatically assisted, electronically operated on AS Tronic.

Diameter: 395 mm

## FRONT AXLE

Type:	F60
Max. design load:	6000 kg

I-section axle. Stub axle with needle bearings.

## REAR AXLE

Type:	SR 10.26
Max. design load:	10500 kg

Single reduction driven axle

Ratio:	4.1
--------	-----

Options:

- Type:	SR 10.20
Max. design load:	10500kg

Single reduction driven axle  
Lockable differential

## FRONT SUSPENSION

Parabolic type leaf springs with swinging shackles at rear; Maintenance free construction including shock absorbers and stabilizer.

Spring dimensions: 2x1900x75x28 (5800 kg)

## REAR SUSPENSION

2-bag air suspension.

### Options:

- Parabolic type leaf springs (10500 kg) with sliding ends at rear

## WHEELS AND TYRES

19.5" x 8.25 (8 stud) steel disc wheels, with 305 / 70 R 19.5 tubeless radial tyres at front and rear; Twin wheels at rear; Spare wheel carrier with spare wheel.

## STEERING

Type: Hydraulic power steering with adjustable steering column for rake and height.

## BRAKE SYSTEM

Dual-circuit air operated disc brakes at front and rear; Asbestos free brake pads.

Disc brake dimension: 375 x 45 mm

Emergency/parking brake with spring brake actuators on rear axles; Pneumatic operated exhaust brake (165kW at 3200rpm); ABS.

### Options:

- ASR (Acceleration Slip Control)

## ELECTRICAL EQUIPMENT

Voltage:	24 V
Alternator:	80 A
Batteries:	2 x 125 Ah
Starter Motor:	24 V
Rear light units:	Incorporating direction indicator light, stop light, reversing light, side marker light and reflector; Main switch with manual control near the battery box.

## TRAILER EQUIPMENT

Optional.

## CAB EXTERIOR

F213 tilt Day Cab with 4 point maintenance free suspension, hydraulic tilting gear; Tilting angle 55°; Heated main and wide angle mirrors for body width up to 2.50 m; Electric adjustable main mirrors and wide angle mirrors; Fixed, illuminated cab steps; Steel front bumper with foot hold; Rear window; Raised air intake.

### Options:

- Sleeper Cab
- Roof hatch
- External sun visor
- Adjustable roof spoiler / side extenders
- Raised air intake (Sleeper cab)
- Combi lights, incorporating driving and fog lights in lower bumper

## COLOURS

Cab colour:	M8870 Ice White
Chassis colour:	Black
Mirror cover:	Black
Bumper colour:	Grey

### Options:

- Various non-standard and metallic cab and chassis colours, see colour guide.

## CAB INTERIOR

High quality trim and upholstery in natural camel-grey colour; Cab floor cover includes easy-clean top layer in camel-grey; Cockpit style dashboard, including DIP (Driver Information Panel) and Adblue indicator; Adjustable luxury air suspended driver seat and fixed co-driver seat with head restraint; Various storage facilities including two cup holders, containers behind seat and overhead compartments; 4 spoke, soft grip steering wheel with integrated control switches; Electric window openers (driver and passenger); Cruise control; Personal road speed limiter; Black dashboard finish; Integrated 3-point seat belt; Air conditioning; Radio/CD/MP3 player with 2 speakers; Antennas: 1 x GSM; Remote control door lock.

### Options:

- 3rd seat (Day Cab only)
- SRS Air Bag
- Hands free telephone kit
- Driver luxury air / passenger dual mate
- Driver luxury air / passenger luxury dual mate

## LEGAL ASPECTS

- Exhaust Emission Euro 4
- ADR 83 Noise Certification
- ECE R29 Cab Certification
- Front Underrun Protection Certification

## APPLICATION CONDITIONS

Raised intake on cab roof; Reverse warning; Standard tool kit; Moisture separator.

## MAX. SPEED

All vehicles are speed limited to 100km/h.

Depending on the vehicle configuration a specific option may not be possible. All weights and measurements should be regarded as approximate only. In the interests of product improvements, DAF Trucks Australia reserve the right to change these specifications without prior notice. For further information please contact DAF Trucks Australia.